

METAL MESH PROTECTIVE GLOVE

1160

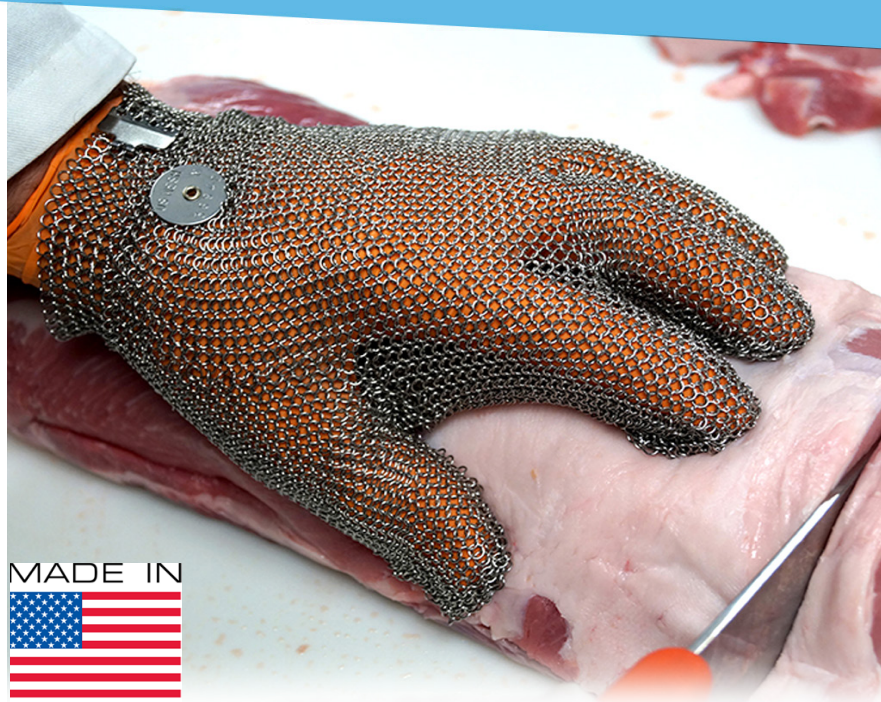
A Glove Designed for Food Service and Commercial Kitchens
Ultimate Cut Protection

US Mesh's style 1160 is the economical choice for cut and puncture protection for countless food processing, restaurant and food service applications. Made from surgical grade .316L stainless steel, this all metal mesh glove offers superior protection, fit and cleanability. This unique all metal closure system yields for a more secure fit as well as improved sanitation characteristics. 21 CFR compliant for direct food contact.

METAL MESH FEATURES:

- Five Finger Reversible Wrist Length
- Side split for quick donning and doffing
- Non-corrosive appropriate for wet kitchen conditions
- Highly cut resistant not cut or puncture proof
- High melting point for high temperature applications

PACKAGED: 1 PIECE PER POLYBAG



MADE IN

U. S. A.

DATA SPECIFICATIONS

RAW MATERIAL SURFACE:	.316L Surgical Stainless Steel Wire
COLOR:	Gray/Stainless
TENSILE STRENGTH:	125,000 PSI
ALLERGEN CONTENTS:	Contains no Proteins Found in Natural Rubber Latex
GLOVE SIZE:	XS (6), SMALL (7), M (8), LARGE (9), XL (10), XXL (11)
STORAGE:	Store Dry and Cool sheltered from Direct Sunlight

This protective glove series offers the ultimate security in cut prevention. Metal mesh gloves can be worn with or without a liner or under liquid proof gloves for medium cut protection. The non-corrosive stainless steel mesh is ideal for wet work environments. This metal mesh glove is available in sizes XSmall thru 2XLarge.

APPLICATIONS TO INCLUDE:

Fast Food and Restaurant Operations,
Supermarkets, Deli and Food Service

SALES@SUMMITGLOVE.COM
TOLL FREE: (800) 245-7117



TKS
TOTALKITCHENSAFETY.COM